

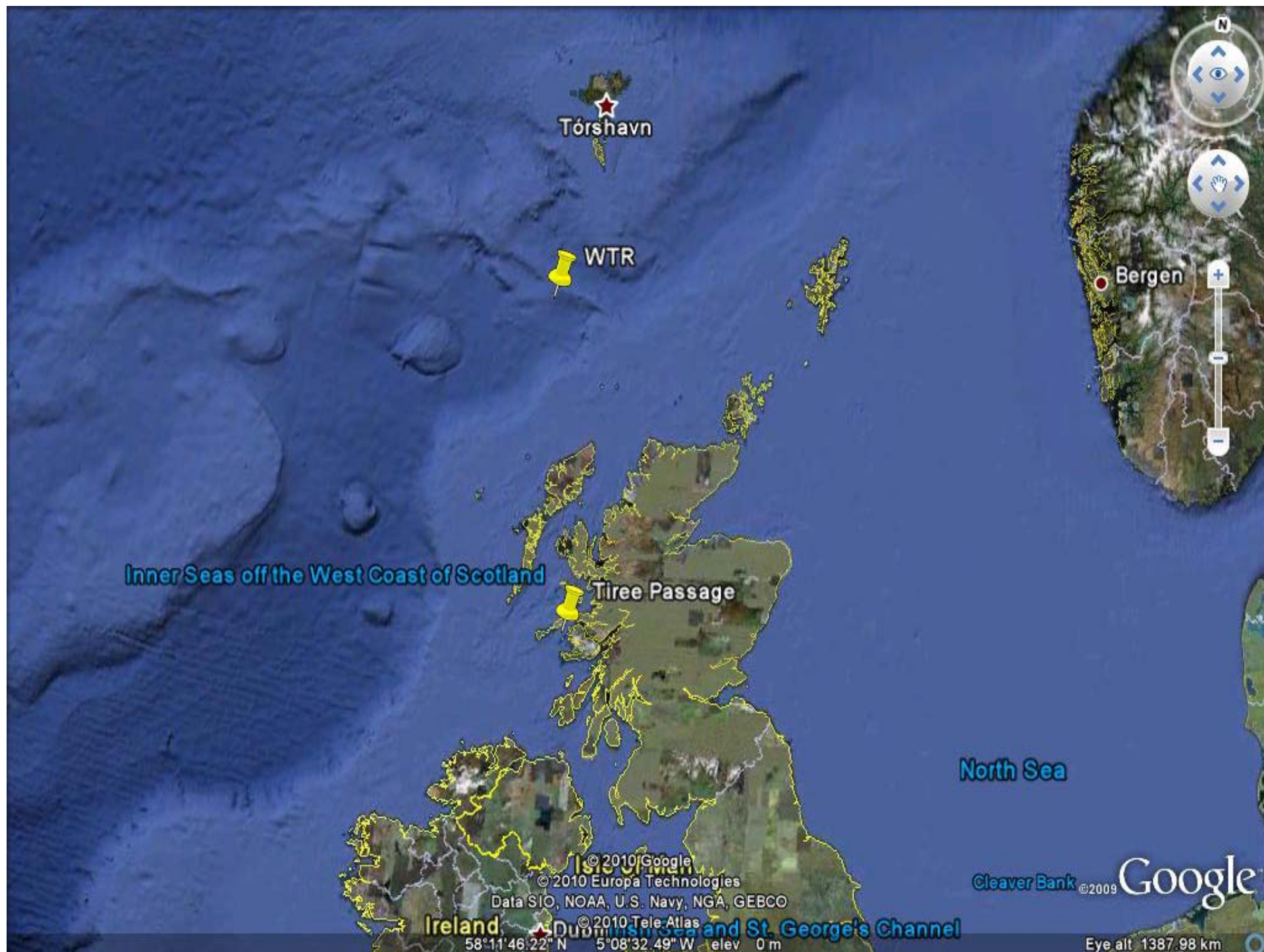
SAMS Mooring Activity

Colin Griffiths, John Beaton, Estelle
Dumont & Jim Elliott



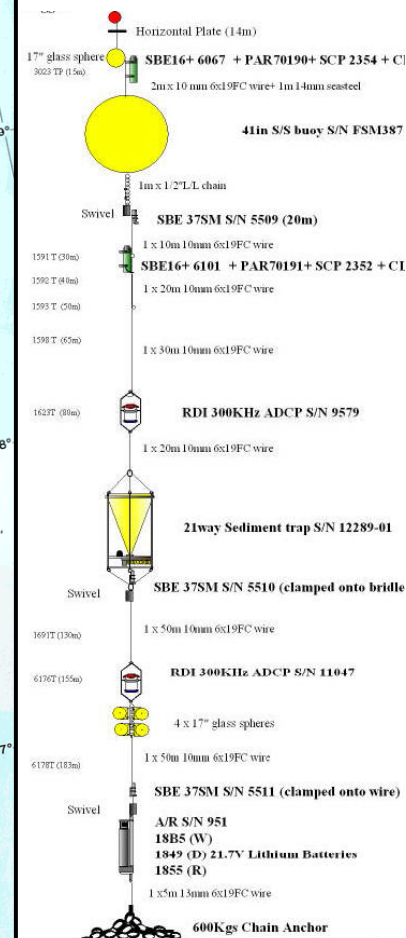
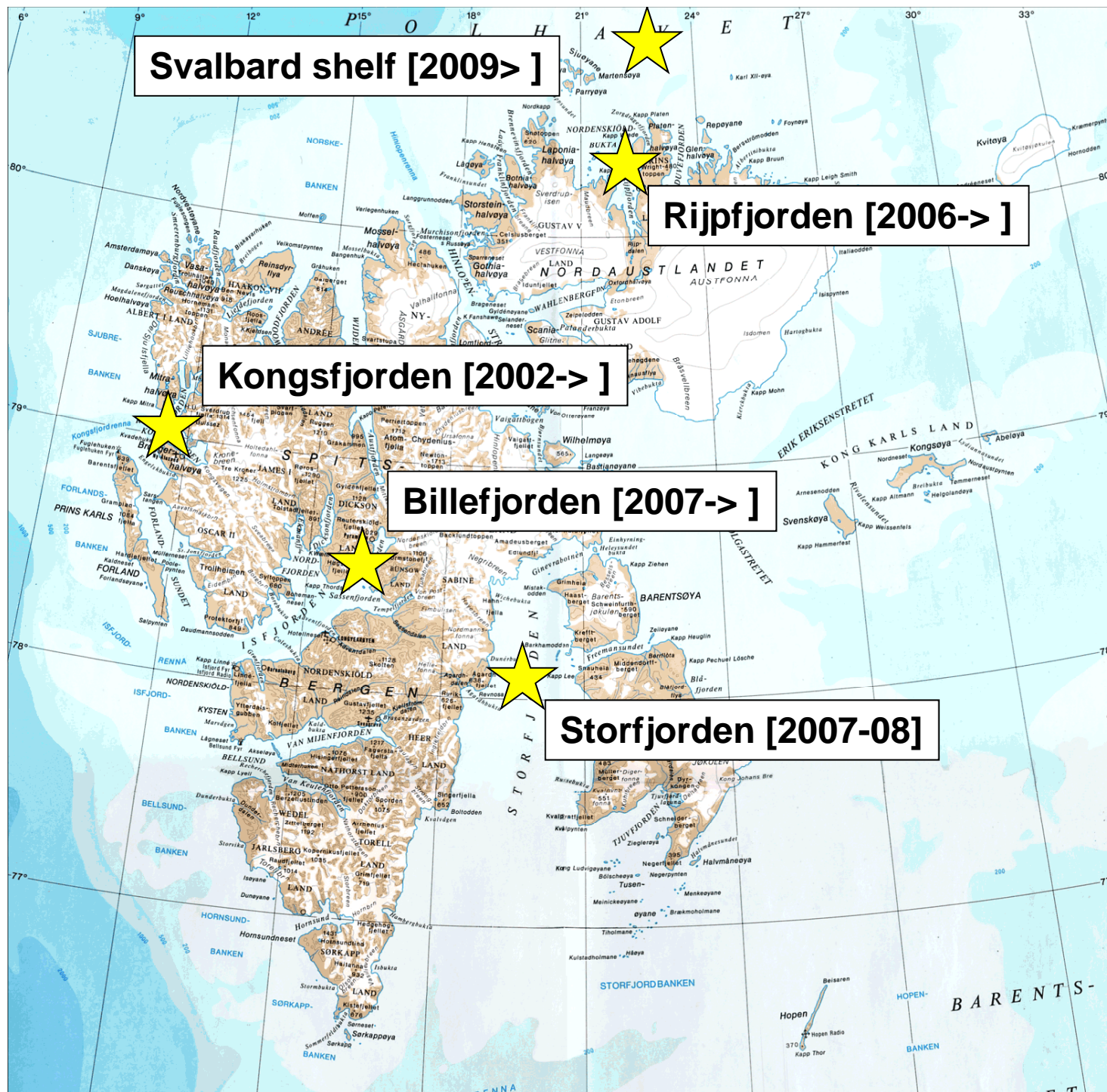
SCOTTISH
ASSOCIATION
for MARINE
SCIENCE







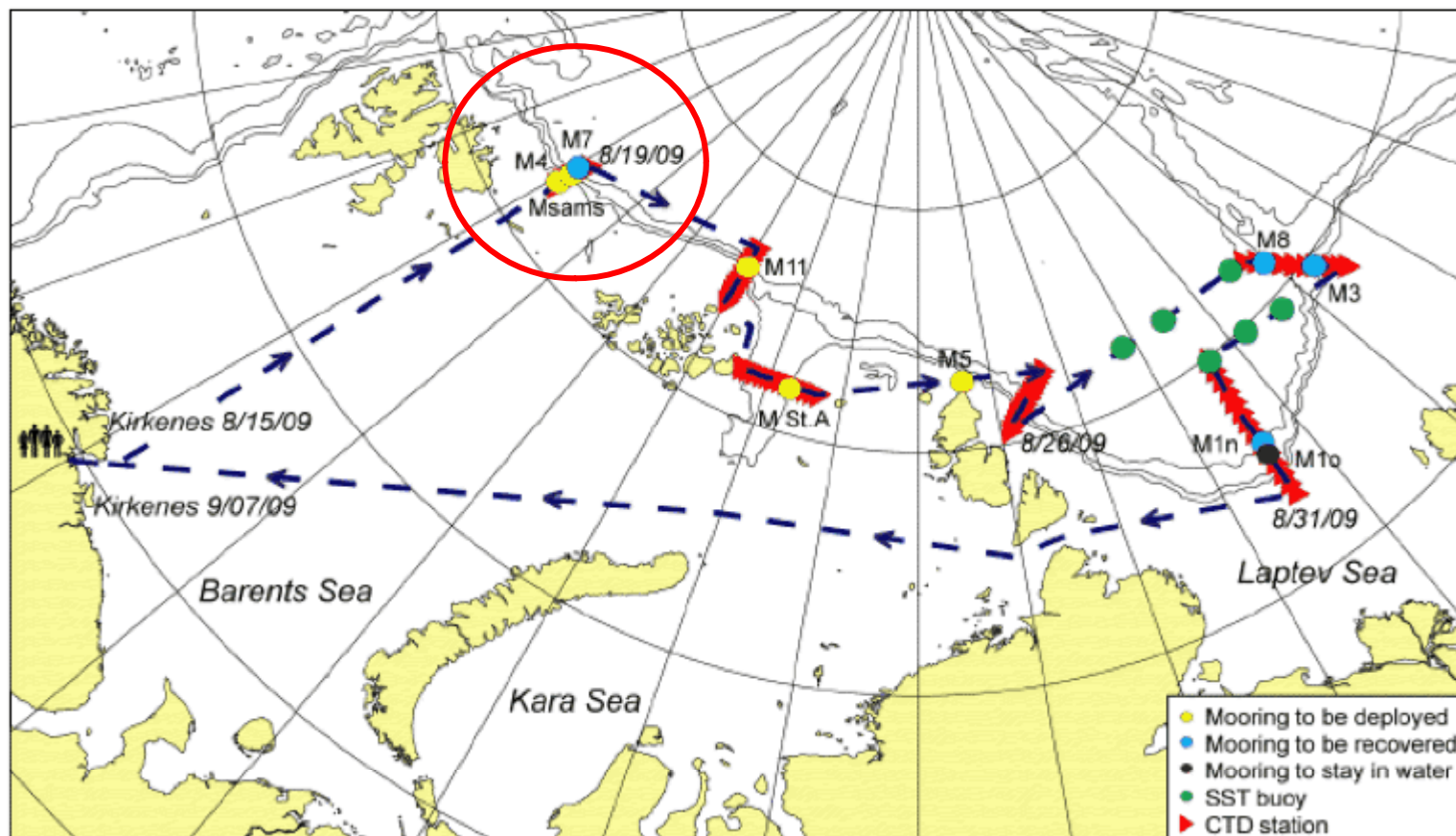




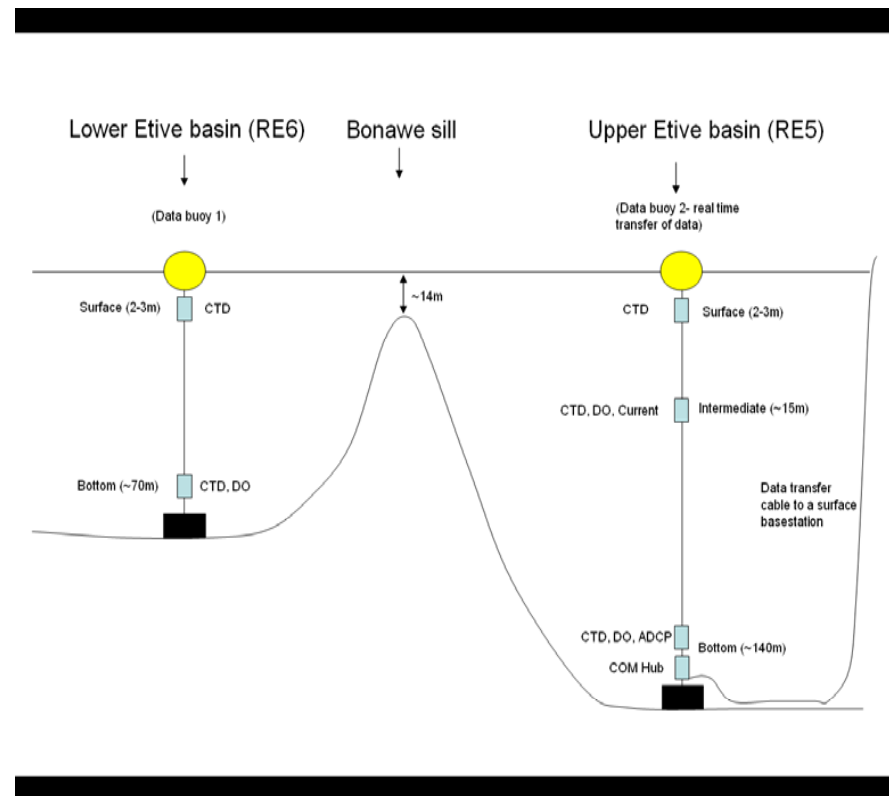
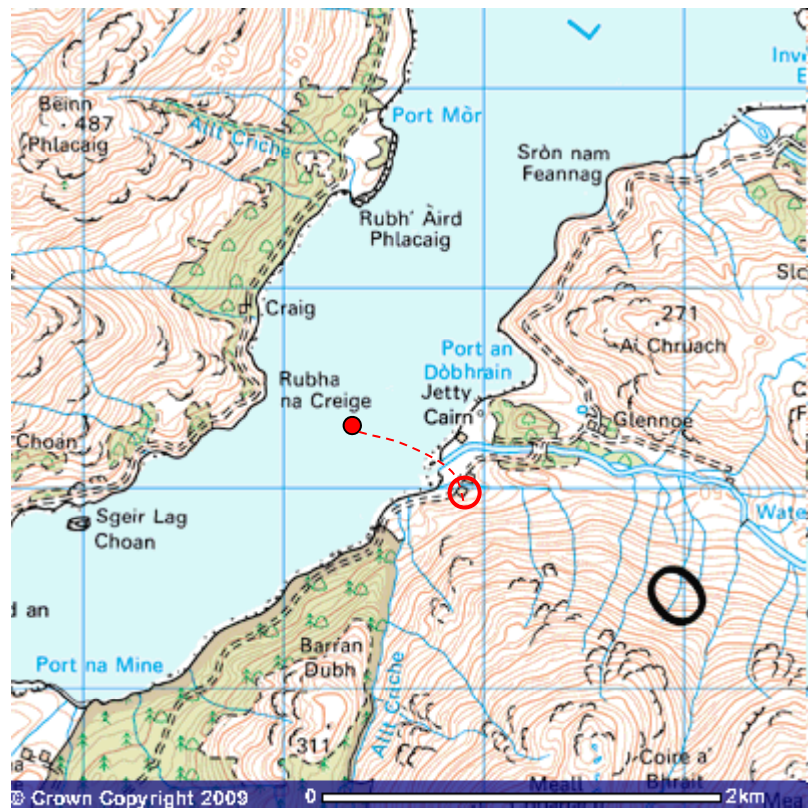


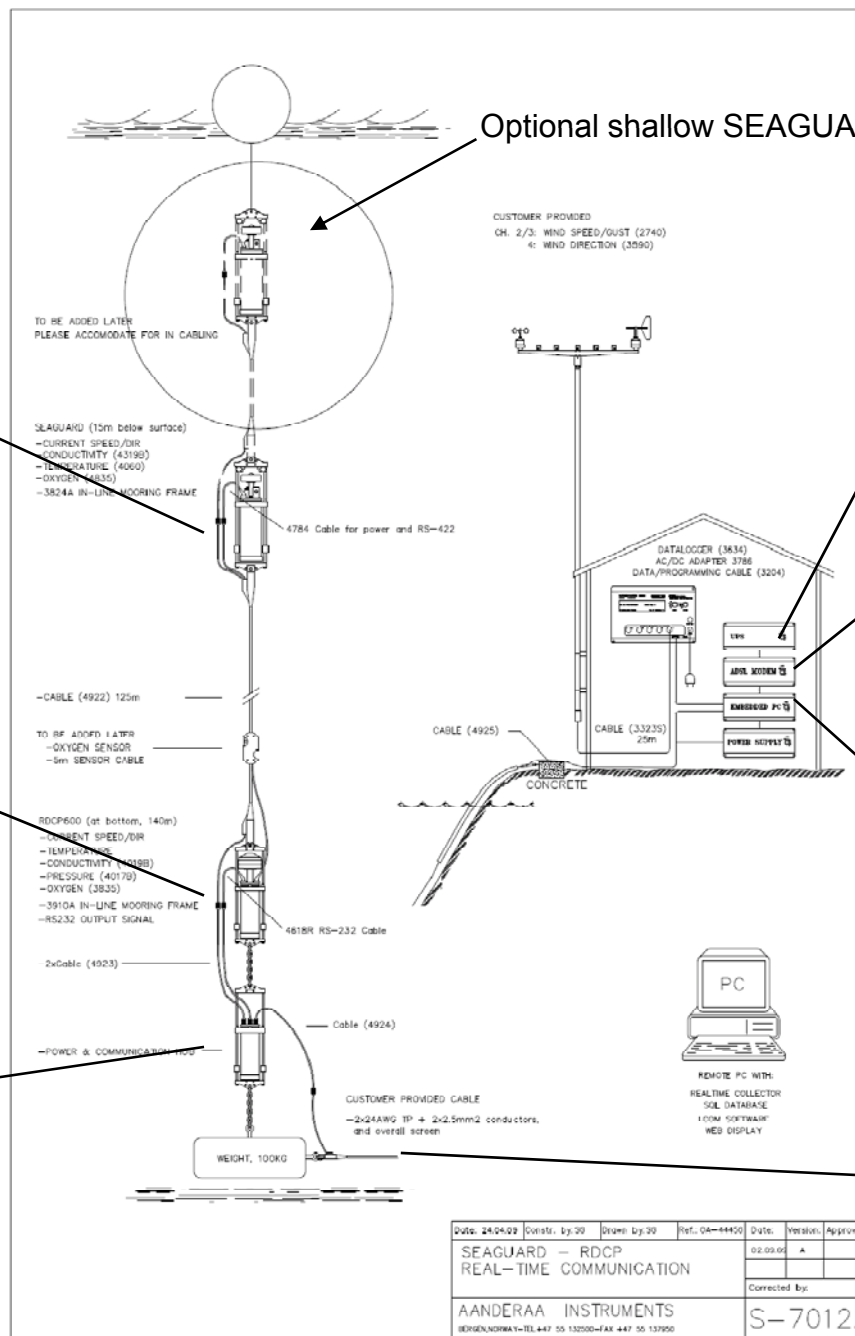
NABOS 2009 Cruise Map

August 15 – September 7, 2009



Loch Etive Observatory (EU-project HYPOX)





Alpha Novus FXM

Outdoor UPS with 850, 1100, or 2000 W/V/A Output



DR-250

ADSL2/ 2+ Router



- ADSL / ADSL2 / ADSL2+ Compatibility
- Four port switch
- Integrated RS-232 terminal server port
- SNMP Management protocol
- Firewall
- IPsec VPN support for up to 200 tunnels
- VPN+ BGP OSPF RFP GRE L2TP routing protocols
- DR4 Net wall or shelf mounted
- 20°C to +55°C
- 15-28VDC supply
- DE1 x DE5 x AES x SSL x SSH

AEC-6520

IP-65 Washable Embedded Controller with Intel® Celeron® M Processor



- Features**
- Fanless
 - Wide Power Input Range
 - Mini Size Outline
 - Robust Architecture
 - Low Power Consumption



Date: 24.04.02	Const. by: 30	Drawn by: 30	Ref.: 04-44450	Date:	Version:	Approved:
SEAGUARD - RDCP REAL-TIME COMMUNICATION				02.09.02	A	
AANDERAA INSTRUMENTS				Corrected by:		
BERGEN, NORWAY - TEL: +47 55 132500 - FAX: +47 55 137050				S-7012A		

Loch Etive Observatory Deployment

1.2 km cable connecting mooring to base station



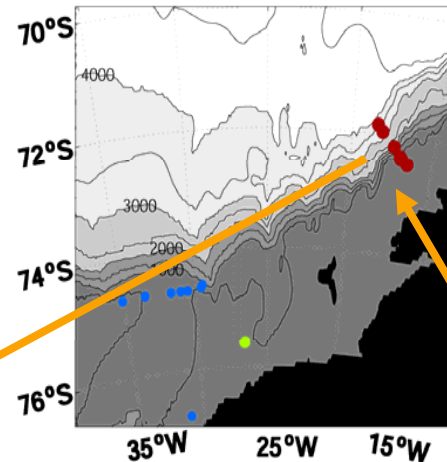


Synoptic Antarctic Shelf-Slope Interaction Study

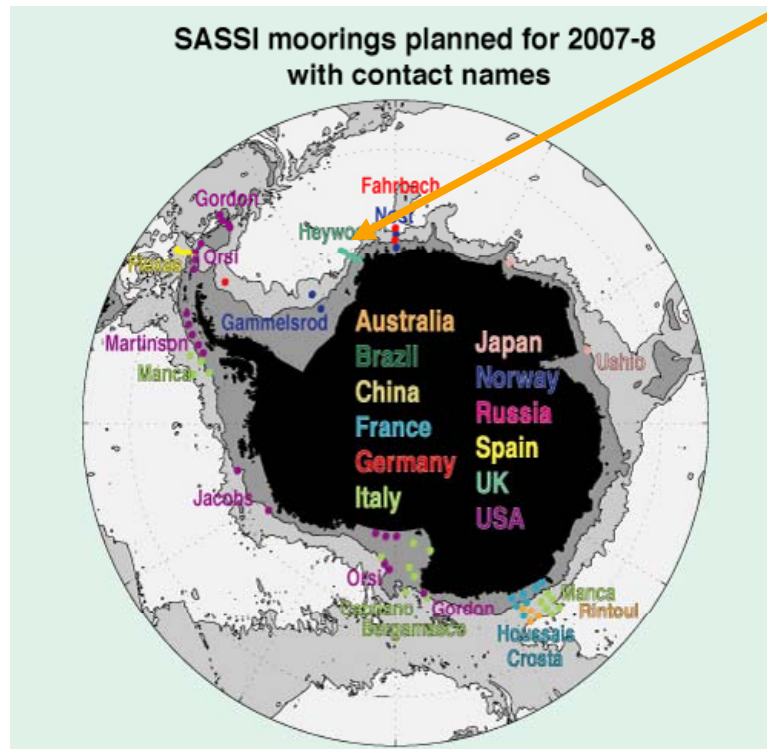
(SASSI 2009 -> 2010 – part of UK IPY)

Heywood (UEA), Nicholls (BAS), Inall and Griffiths (SAMS)

An international effort to close the freshwater budget of the Antarctic shelf and continental slope.



- 5 Mooring Array
 - 12 month deployment
 - Water samplers for $\delta^{18}\text{O}$
- Analysis



Data from the array will be used to calculate the seasonal variability of the transport and water properties on the continental shelf and slope as they flow into the Weddell Sea: an important region for Antarctic Bottom Water formation.

